

Student's Assessment Number.....

TAHOSSA KINONDONI AND UBUNGO DISTRICTS
NON-GOVERNMENT SECONDARY SCHOOLS
FORM TWO MOCK ASSESSMENT

033**BIOLOGY****Time: 2:30 Hours****Year: 2022****Instructions**

1. This paper consists of sections A, B and C with a total of **ten (10)** questions.
2. Answer **all** questions
3. Section A carries **fifteen (15)** marks, section B **seventy (70)** marks and section C carries **fifteen (15)** marks.
4. All writing must be in the spaces provided
5. Cellular phones and any unauthorized materials are not allowed in assessment room.
6. Write your **Assessment Number** at the top right corner of every page.

FOR ASSESSOR'S USE ONLY		
QUESTION NUMBER	SCORE	ASSESSOR'S INITIALS
1		
2		
3		
4		
5		
6		
7		
8		
9		
10		
TOTAL		
CHECKER'S INITIALS		



Student's Assessment Number.....

SECTION A (15 Marks)Answer **all** questions in this section

1. For each of the items (i) – (ix), choose the correct answer from among the given alternatives and write its letter in the box/space provided.
 - (i) In biology; lizard, fish, human being and goat are studied under;

A. Botany B. Cytology C. Mycology D. Zoology
 - (ii) Organisms with true nucleus also called

A. Prokaryotes B. Akaryotes C. Eukaryotes D. Protoctists
 - (iii) A cooked piece of meat is prevented from entering the wind pipe by

A. Larynx B. Epiglottis C. Pharynx D. Tonsils
 - (iv) What will happen if Phloem tissue is destroyed in green plants

A. Absorption of mineral salts will stop
B. Absorption of water in the plant body will stop
C. Transport of manufactured food will stop
D. Transport of water and manufactured food will stop
 - (v) Body immunity which develops after infection and remains in the body permanently is known as

A. Natural active immunity C. Artificial passive immunity
B. Natural passive immunity D. Artificial active immunity
 - (vi) COVID-19 is a pandemic disease caused by corona virus which can be spread through

A. Washing hands with clean running water and sanitizer
B. Coming into contact or inhaling droplets from infected person
C. Wearing a new face mask
D. Vaccination of COVID-19
 - (vii) The proper method of disposing biohazardous waste in the community is by

A. Burying C. Recycling
B. Incineration D. Feeding animals
 - (viii) When the heart of mammal contracts blood in the right ventricle is forced out

A. Through the pulmonary artery
B. Through the pulmonary vein
C. Through the Aorta
D. Into the right Auricle
 - (ix) When a person gets near fire' feels the heat and move away. Which of the sense organs involved in this action?

A. Skin B. Eyes C. Tongue D. Ears

Student's Assessment Number.....

- (x) To study biology effectively it involves the use of tools and equipments. Which among the following equipments is used to pick up insects without harming them?

- A. Mortar and pestle
B. Hand lens
C. Sweep nets
D. A pooter

2. Match the phrase in **List A** with responses in **List B** by writing the letter of the correct responses below the corresponding item number in the table provided.

List A	List B
(i) Green pigment found in plants.	A. Lamina
(ii) Process through which plants loses water via stomata.	B. Spongy mesophyll
(iii) A broad part of a leaf which increase surface area for absorption of light and carbondioxide.	C. Palisade mesophyll
(iv) A part of a leaf which is exactly site for photosynthesis.	D. Chlorophyll
(v) A water proof material which protect the leaf from injury and excessive water loss.	E. Cuticle
	F. Margin
	G. Evaporation
	H. Transpiration
	I. Guard cells
	J. Stomata pore

Answer

List A	(i)	(ii)	(iii)	(iv)	(v)
List B					

SECTION B (70 Marks)

Answer **all** questions from this section

3. (a) Give the meaning of the term Biology laboratory.

.....
.....

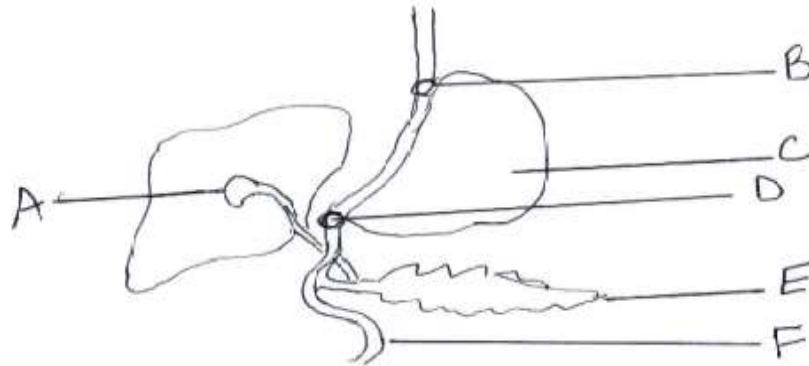
- (b) In what ways do biology laboratory differs from physics and chemistry laboratories? Give four points.

- (i)
(ii)
(iii)
(iv)

Student's Assessment Number.....

- (c) According to the laboratory rules what should you do in the following situation?
- (i) While you are doing experiments' you realize that you need to go and get a book from the classroom.....
.....
- (ii) Your partner suggests that you carry the apparatus and chemicals out of the laboratory so that you can repeat the experiments in your free time.
.....
.....
- (iii) One of your class-mate has brought chocolates to the laboratory.
.....
.....
- (d) Motor car is able to move, consumes fuel, give out carbondioxide and become old. Give two reasons as to why it is not classified as living thing.
- (i)
- (ii)

4. (a) Figure 1 below represents a part of the mammal's digestive system. Study it carefully and answer questions that follow:



- (i) Name the parts labelled with the following letters.
- | | |
|---------|---------|
| A. | D. |
| B. | E. |
| C. | F. |
- (ii) Outline the functions of parts labelled.
- A.
- B.

Student's Assessment Number.....

(b) Give out food substances and their corresponding end product of digestion.

Food Substance	End Product Of Digestion
(i)	
(ii)	
(iii)	

(c) How is ileum adapted to its function?

- (i)
- (ii)

5. (a) List down taxonomic hierchies (Ranks) of classification from the highest to the lowest.

- (i) (v)
- (ii) (vi)
- (iii) (vii)
- (iv) (viii)

(b) Why are Fungi useful to our daily life?

- (i)
- (ii)
- (iii)

(c) Classify fern into kingdom and Division.

Kingdom

Division

6. (a) With examples, state the meaning of Biotic and abiotic components.

(i) Biotic

.....

.....

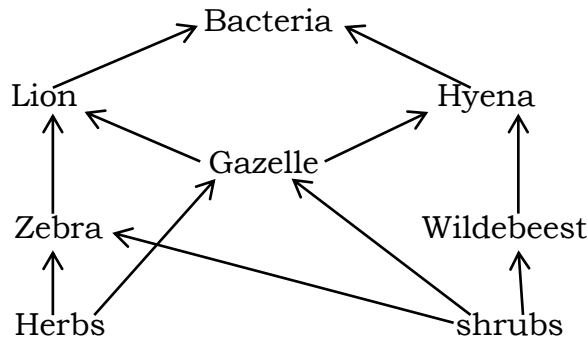
(ii) Abiotic

.....

.....

Student's Assessment Number.....

(b) Study the following diagram and answer the question that follows.



(i) What is the name of the diagram above?

(ii) From the diagram (b) above name

Producers

Primary consumer

(c) Construct a food chain from the diagram above

(d) What are the significance of food chain in real life situation?

(i)

(ii)

7. (a) Biology involves use of specific measurements, instruments and units in order to investigate thing. Define the following terms as used in biology and give its instrument

Term	Instruments
(i) Mass
(ii) Temperature
(iii) Length

(b) Start on with Hypothesis, what are next set of steps a researcher should follow during investigation.

.....

.....

8. (a) List down three types of blood cells.

(i)

(ii)

(iii)

Student's Assessment Number.....

(b) Give five functions of blood.

- (i)
- (ii)
- (iii)
- (iv)
- (v)

(c) Outline any two disadvantage of blood transfusion.

- (i)
- (ii)

9. (a) Mention six common accidents that occur in the classroom or laboratory.

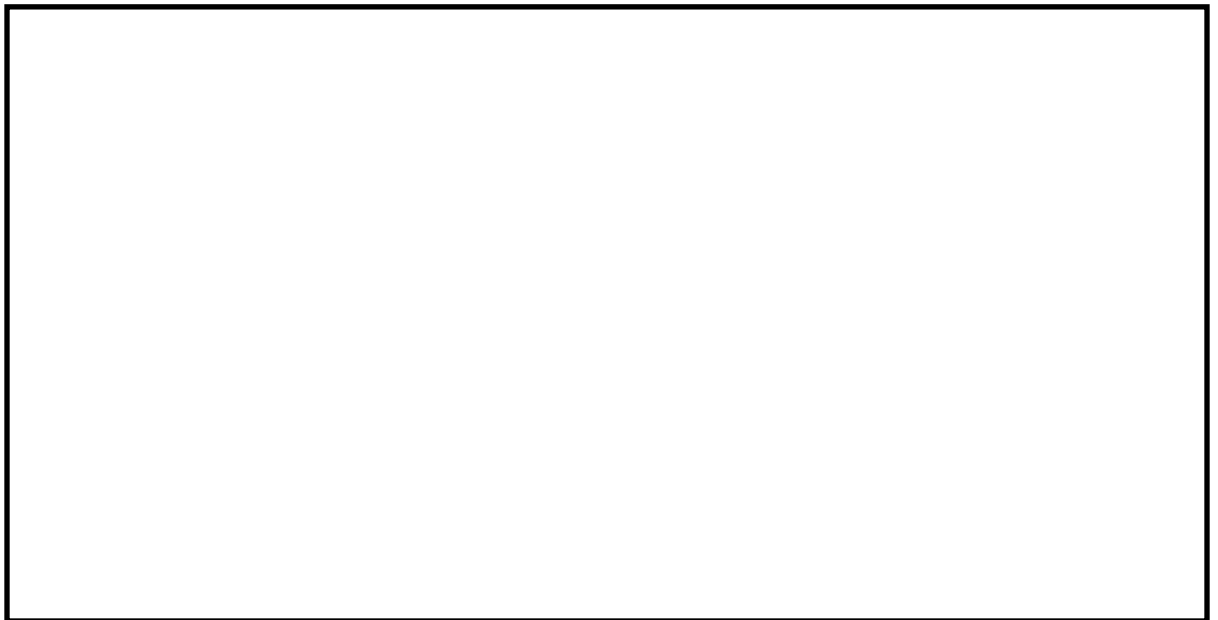
-
-
-

(b) Which item or components of First Aid Kit can be used to assist the following situation?

- (i) Someone having headache
- (ii) Calling for help

(c) (i) Define cell

(ii) Draw well labelled diagrams of an animal cell and show its main parts as seen under light microscope



- Causes of the disease
- Where the causative organisms can be found in infected people
- Transmission of the disease. Give four points
- Symptoms of the disease. Give four points
- Prevention and control of the disease. Give any four points.

This image shows a single sheet of white paper with horizontal blue ruling lines. The lines are evenly spaced and run across the width of the page. There are no margins, text, or other markings on the paper.

Student's Assessment Number.....

Page 9 of 9

F2MA, 2022