

Student's Assessment Number.....

**PRESIDENT'S OFFICE
REGIONAL ADMINISTRATION AND LOCAL GOVERNMENT
UBUNGO MUNICIPAL COUNCIL
FORM TWO MOCK EXAMINATION
BIOLOGY**

033

Time: 02:30 Hours**Wednesday, 2nd June, 2021 p.m****Instructions**

1. This paper consists of sections A, B and C with a total of **eleven (11)** questions.
2. Answer **all** questions in sections A and B and **one (1)** question from section C.
3. Section A carries **thirty (30)** marks, section B **fifty (50) marks** and section C **(20) marks**.
4. All writing must be in black or blue ink **except** drawings which must be in pencil.
5. Cellular phones and any unauthorized materials are **not** allowed in the assessment room.
6. Write your **Assessment Number** at the top right corner of every page.

FOR ASSESSOR'S USE ONLY		
QUESTION NUMBER	SCORE	ASSESSOR'S INITIALS
1		
2		
3		
4		
5		
6		
7		
8		
9		
10		
11		
TOTAL		
CHECKER'S INITIALS		

SECTION A (20 Marks)Answer **all** questions in this section.

1. For each of the item (i)-(x), choose the correct answer from among the given alternatives and write its letter in the box provided
- i. A room designed for experiments and observation of samples is known as
A. Hospital
B. Classroom
C. Laboratory
D. Pharmacy
- ii. Which substance can be tested by using Benedict's solution
A. Reducing sugar
B. Starch
C. Lipids
D. Protein
- iii. The highest rank of classification is known as
A. Class
B. Species
C. Kingdom
D. Phylum
- iv. If a child have a swollen abdomen thin arms and leg and weak and brownish hair is likely to have which nutritional disorder
A. Marasmus
B. Kwashiorkor
C. Obesity
D. Rickets
- v. The main reason for keeping food on refrigerators is to make it
A. Cold
B. Last longer
C. Sweet
D. Soft
- vi. Absorption of food in alimentary canal take place in the
A. Colon
B. Duedunum
C. Stomach
D. Ileum
- vii. Which of the following is NOT a field of study related to biology
A. Agriculture
B. Nutrition
C. Astrology
D. Medicine
- viii. COVID 19 is a disease which caused by
A. Virus
B. Amoeba
C. Bacteria
D. Plasmodium
- ix. Which of the following enzymes is produced in the Mouth
A. Lipase
B. Salivary amylase
C. Sucrose
D. Trypsin

Student's Assessment Number.....

x. Which of the following are NOT a component of first aid kit?

A. Bandage

C. Soap

B. Microscope

D. Panadol



2. For each of the items (i)-(x) write TRUE if the statement is correct or FALSE if the statement is incorrect in the spaces provided.

- i. All green plants are decomposers.....
- ii. The use of unsterilized equipments can lead to HIV/AIDS transmission.....
- iii. Fern plant belong to division pteridophyta.....
- iv. Salting and drying are modern method of food preservation.....
- v. Syphilis is a communicable disease.....
- vi. Handlens makes object look bigger than normal size.....
- vii. Epiglottis is the structure that allow entrance of food to the trachea.....
- viii. Plant cell lack chloroplast.....
- ix. Good manners involves talking while eating.....
- x. Calcium help to strengthen teeth and bone.....

3. Match the phrase in **LIST A** with responses in **LIST B** by writing the letter of the correct response in **LIST B** below the corresponding phrase number of **LIST A** in table provided.

LIST A	LIST B
i. A disease characterised by fever and prolonged coughing with blood sputum.	A. Cholera
ii. A disease transmitted by an agent known as anopheles.	B. Typhoid
iii. A viral disease transmitted through sexual intercourse	C. AIDS
iv. A disease caused by lack of proper hygiene and victim had a stoll of rice-water colouration	D. Malaria
v. A disease transmitted through sexual intercourse and treated by antibiotics	E. Syphilis
	F. Influenza
	G. Schistosoma
	H. Tuberculosis

Answer:

LIST A	i	ii	iii	iv	v
LIST B					

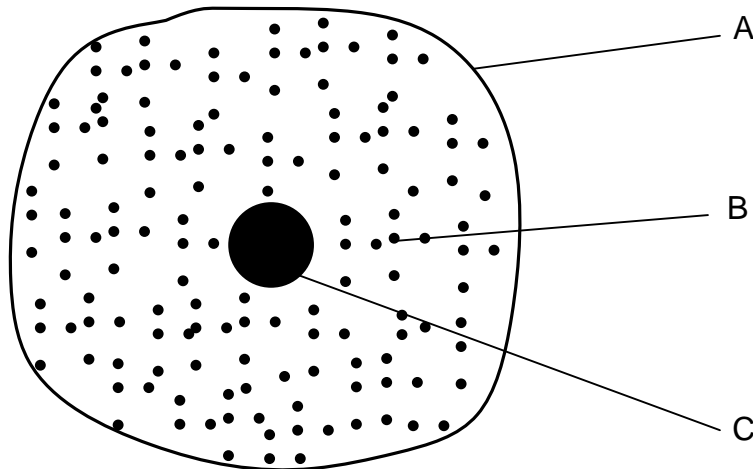
4. Complete each of the following statements by writing the correct answer in the spaces provided:

- i. Magnifies the specimen under observation.....
- ii. Raises or lowers the body tube in order to bring the image into sharp focus.....
- iii. Surface on which the specimen to be observed is placed.....
- iv. Reflects and directs light to the specimen under observation.....
- v. Regulate amount of light passing from the mirror to the condenser.....

Student's Assessment Number.....

SECTION B (50 Marks)Answer **all** questions in this section.

5. The figure below represent a diagram of a simple animal cell. Study the diagram then answer the questions that follows:



- a) Name the part labelled with letters A, B and C

A

B

C

- b) Give the function of the part labelled C

.....

- c) Give three differences between animal cell and plant cell:

Animal cell	Plant cell
1)	
2)	
3)	

6. (a) Write the meaning of the following words:

i. Biology

.....

.....

ii. Zoology

.....

.....

- (b) Why do we study Biology? Give two reasons.

i.

ii.

Student's Assessment Number.....

(c) What are the facilities that a biology Laboratory should have? State (6) facilities.

- i.
- ii.
- iii.
- iv.
- v.
- vi.

7. (a) Define the following terms:

- i. Ecosystem
.....
.....
.....
- ii. Food chain
.....
.....
.....
- iii. Food web
.....
.....
.....
- iv. Habitat
.....
.....
.....

(b) Explain the role of each of the following organisms in the ecosystem.

- i. Decomposers
.....
.....
- ii. Producers
.....
.....

(c)(i) Construct a food web using the following organisms shrubs, lion, gazelle, hyena, wildbeast and fungi.

Student's Assessment Number.....

- (ii) From the food web above in (c)(i) identify the following:
- Producer
 - Decomposer
8. (a)(i) Give the meaning of the word waste disposal.
- (ii) There are basic principles of waste disposal
-
 -
 -
- (b) State three (3) methods of waste disposal.
-
 -
 -
- (c) What are the effects of poor waste disposal (3 points).
-
 -
 -
9. If you put a piece of bread in a wet cupboard after a few days the bread will be covered with organism called fungi.
- Give the common name of these fungi which grow on bread
.....
 - Outline the three phyla of the Kingdom fungi
 -
 -
 -
- Outline five advantages of Kingdom fungi
 -
 -
 -
 -
 -

SECTION C (20 Marks)Answer **one (1)** question from this section.

10. Write an essay on bacteria by using the following guidelines.
- Meaning
 - Characteristics
 - Advantages
 - Disadvantages
11. Explain the causes, modes of transmission and prevention measures of cholera as one of the communicable disease in Tanzania.

[illegible]